

COMPANY REGISTRATION NUMBER: SC365015  
CHARITY REGISTRATION NUMBER: SC024254

**Fife Gingerbread**  
**Company Limited by Guarantee**  
**Financial Statements**  
**31 March 2023**

18 North Street, Glenrothes, Fife KY7 5NA 01592 610388  
8 Mitchell Street, Leven, Fife KY8 4HJ 01333 425250  
[www.patersonboyd.com](http://www.patersonboyd.com)



**PB AUDIT LIMITED**  
REGISTERED AUDITORS

**Fife Gingerbread**  
**Company Limited by Guarantee**  
**Financial Statements**  
**Year ended 31 March 2023**

---

	<b>Page</b>
Trustees' annual report (incorporating the directors' report)	<b>1</b>
Independent auditor's report to the members	<b>12</b>
Statement of financial activities (including income and expenditure account)	<b>17</b>
Statement of financial position	<b>18</b>
Statement of cash flows	<b>19</b>
Notes to the financial statements	<b>20</b>

---

**Fife Gingerbread**  
**Company Limited by Guarantee**  
**Trustees' Annual Report (Incorporating the Directors' Report)**  
**Year ended 31 March 2023**

---

The trustees, who are also the directors for the purposes of company law, present their report and the financial statements of the charity for the year ended 31 March 2023.

**Chair's report**

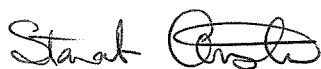
The past year has been another one of positive change for Fife Gingerbread, but it has also felt like one where we have taken some big strides towards focusing our efforts on supporting families with the greatest levels of need. Central to that effort has been our commitment to co-producing our support responses with our partners and stakeholders and especially with our Parent's Forum.

We have continued our fundraising efforts and, despite the cost-of-living crisis, have received some tremendous support from both corporate sponsors and from private individuals. This effort has allowed us to not only support our ongoing work, but also to test new ways of working and explore avenues of future work. This has been exemplified by the Lone Parents, Poverty and Work Programme being undertaken with employers to find new models of working which not only allows them to fill vacancies but be flexible enough to respond to the needs of our parents looking to get back into employment.

We continue to have a presence and influence at a national level across a range of subjects which affect the daily lives of the families we support. This includes our ongoing call for changes to the Child Maintenance regime in Scotland. As an organisation, we will look to continue to have this national presence over the coming year and look for new opportunities to promote the rights of families.

We have welcomed new staff members and said goodbye to others, but we have taken these changes in our stride and our staff team have been very well supported by our Management Team. Our volunteers have continued to offer invaluable informal support and hope to families, and we couldn't do it without their commitment. At a Board level, we have said goodbye to Coryn Barclay, Elizabeth Goldie and Jacqueline McGregor who will be sorely missed. At the same time, we have welcomed Kevin Sayer, Stephen Heslop, Gemma Pettie, Lisa Bray and Sharon Connon on to the Board and we very much look forward to working with them over the coming year.

As Chairman of the Board of Trustees, I would like to thank every family, staff member, volunteer, trustee, partner and funder who have contributed to making this past year the success it has been.



Stewart Christie

22/9/23

# Fife Gingerbread

## Company Limited by Guarantee

### Trustees' Annual Report (Incorporating the Directors' Report) *(continued)*

Year ended 31 March 2023

---

#### Reference and administrative details

Registered charity name	Fife Gingerbread
Charity registration number	SC024254
Company registration number	SC365015
Principal office and registered office	Unit 9, Craig Mitchell House Flemington Road Glenrothes Fife Scotland KY7 5QF

#### The trustees

George Proudfoot	
Michael Scott	(Resigned 30 May 2023)
Stewart Christie	
Jemma Forbes	
Lynne Dunn	
Gemma Pettie	(Appointed 7 March 2023)
Stephen Heslop	(Appointed 27 February 2023)
Lisa Bray	(Appointed 10 January 2023)
Sharon Cannon	(Appointed 22 November 2022)
Kevin Sayer	(Appointed 26 May 2022)
Coryn Barclay	(Resigned 22 November 2022)
Jacqueline McGregor	(Resigned 26 May 2022)
Elizabeth Goldie	(Resigned 25 August 2022)

#### Key management personnel

Strategic Manager	Laura Millar
Finance & Business Support Manager	Yvonne Moyes
Families & Children Manager	Kathryn Miller
Chairperson	Stewart Christie
Treasurer	Lisa Bray
Fife Council Link Officer	Lesley Elias
Company secretary	Jemma Forbes

---

# Fife Gingerbread

Company Limited by Guarantee

Trustees' Annual Report (Incorporating the Directors' Report) *(continued)*

Year ended 31 March 2023

---

<b>Auditor</b>	PB Audit Limited Registered Auditors 18 North Street Glenrothes Fife KY7 5NA
<b>Bankers</b>	Royal Bank of Scotland plc 23/25 Rosslyn Street Kirkcaldy Fife Scotland KY1 3HA  Bank of Scotland 60 High Street Leven Fife KY8 4NA

# Fife Gingerbread

## Company Limited by Guarantee

### Trustees' Annual Report (Incorporating the Directors' Report) *(continued)*

Year ended 31 March 2023

---

#### Structure, governance and management

##### Governing document

The organisation was established in 1987, the constitution was revisited, reviewed and approved to bring it into line with changing legislation at the general meeting in October 2006 and approved by Office of the Scottish Charity Regulator (OSCR). The organisation made the transition to a company limited by guarantee on the 3 September 2009 and the company continues to have charitable status. The company was established under a Memorandum of Association, which established the objects and powers of the charitable company and is governed under its articles of association. In the event of the company being wound up the members are required to contribute £1.

##### Recruitment and Appointment of Management Committee

The Board of Trustees are members of the organisation, nominated and elected to serve on the Board and re-elected annually and include two officer positions. A mix of skills and backgrounds serve the organisation and are supported by advisors who are requested to lend expertise where necessary.

##### Board Recruitment, Induction & Training

Board members are recruited to fill any skills gaps identified on the Board and most have an awareness of the work of the organisation and are already familiar with the practical work and values of the organisation. This is supplemented with additional induction, skills assessment and development training opportunities.

##### Remuneration for Key Management

The remuneration of key management personnel is set by reference to external equivalent roles. Periodic benchmarking is carried out. Any annual salary increases are recommended by the Finance sub group to the HR sub group and are then incorporated into the annual budget which is approved by the Board of Trustees.

##### Risk Management

The Board continually review the risks to the organisation to ensure the work of the organisation can continue should disaster strike with business contingency measures. On a practical level, employees conduct regular health & safety risk assessments in relation to the service delivery and the risk to members of the public. The development of the service is in response to eliminating risk to members.

# Fife Gingerbread

## Company Limited by Guarantee

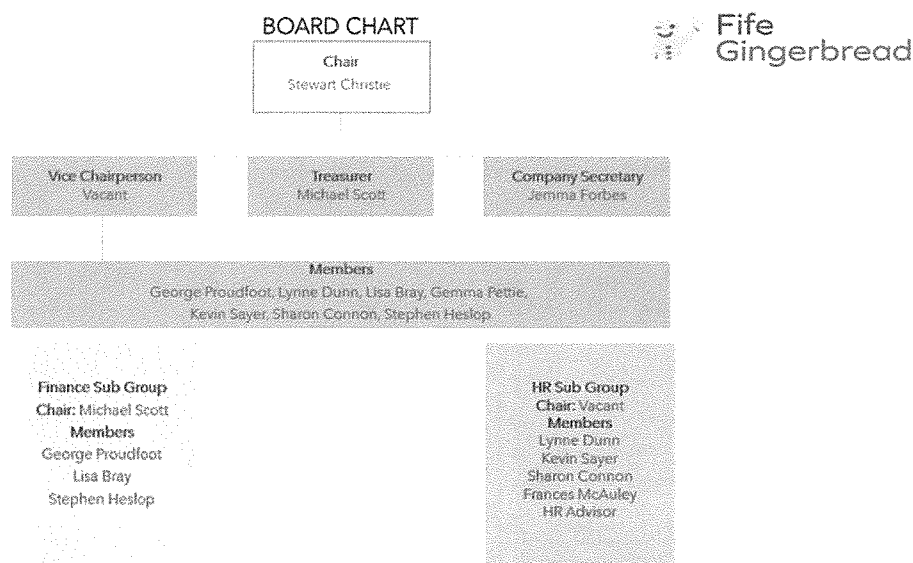
### Trustees' Annual Report (Incorporating the Directors' Report) *(continued)*

Year ended 31 March 2023

---

#### Structure, governance and management *(continued)*

##### Board of Trustee Structure



##### Related Parties

In so far as it is complementary to the charity's objectives the charity is guided by both local, regional and national policy. At a local level the work is influenced by children services, poverty and community planning. Working in partnership with many local and national organisations to deliver services and raise awareness.

##### Objectives and activities

The organisation's principal objective is:

"The prevention or relief of poverty through the promotion and provision of specialist support to lone parents and vulnerable and disadvantaged families in Fife in the interest of social welfare so that their quality of live may be improved." Section 4 - Articles of Association

Fife Gingerbread's 2020-25 Strategy is a key tool to progressing our principal objective and our Vision to create "better todays and brighter tomorrows for Fife's lone parents and families in need". The Strategy promotes our commitment to supporting and empowering families in Fife through our projects, and embraces a Systems Change approach to champion for change on behalf of families. Aiming to give children growing up in complex circumstances the best possible start in life through our projects, campaigns and by raising awareness.

Our projects continue to be the primary output of the organisation - providing a direct frontline response locally and making an important contribution to Scottish Governments commitments to

---

# Fife Gingerbread

## Company Limited by Guarantee

### Trustees' Annual Report (Incorporating the Directors' Report) *(continued)*

Year ended 31 March 2023

---

#### Objectives and activities *(continued)*

tackling child poverty. Growing up in poverty affects the outcomes and life chances of children, but with support from organisations like Fife Gingerbread we can change the trajectory for children and young people in Fife. We continue to cultivate and grow partnerships locally to ensure a joined up seamless package of support for vulnerable families.

Our model for supporting families is simple, flexible and responsive. (Engage-Support-Progress). Empowering staff and volunteers to build relationships with families and take a strengths-based approach that tailors support to meet the needs of each household to create safe, warm and nurturing homes.

Staff and volunteers demonstrate an unwavering commitment to our work, and we are equally committed to our role/responsibility to nurture their skills and talents and promote their own personal wellbeing. All of which is aligned with our organisational values (Empowerment, Quality, Inclusive, Trust and Respect). Quarterly development days have provided a platform to engage our team in the organisational objectives, plans and activities.

#### Achievements and performance

Over the last year the organisation is proud to share some of the highlights:

- Our Parent's Forum has grown their contribution to improving our approach and activity internally, and also working to influence policy (both local and national).
- Fundraising continues to evolve and make an important contribution to the financial stability of the organisation, including launching a new Day2Play appeal and developing our external comms presence and impact.
- Family learning opportunities such as tea-time clubs, playgroups and holiday activities address both food and play poverty. Providing a whole family support and helping families to connect in their communities and build peer support networks.
- The organisation continues to strengthen partnerships locally and contribute to key strategic groups such as the Tackling Poverty & Preventing Crisis board, Child Poverty Group and Fife's Leadership Summit.
- Our Volunteer Coordinators have been revamping our approach to volunteering and prioritising the engagement, ongoing support and development of our wonderful volunteers.
- Fife Gingerbread and Poverty Alliance have revisited the challenge of Child Maintenance in Fife and will publish a Report in Spring-23 (identifying opportunities to take forwards the recommendations).
- The organisation funded and successfully launched a new initiative. Lone Parents, Poverty & Work. The purpose of the initiative is to engage local employers in the conversation about child poverty, exploring their role as an employer in the solution and identifying creative pathways to support lone parents (an incredible pool of talent) into well paid, flexible and healthy work.



# Fife Gingerbread

## Company Limited by Guarantee

### Trustees' Annual Report (Incorporating the Directors' Report) *(continued)*

Year ended 31 March 2023

---

#### **Achievements and performance** *(continued)*

- The team rose to the challenge of the cost-of-living crisis that not only affected families we support, but also our staff and volunteers. Fife Gingerbread secured additional funding to provide direct support to families in order to prevent crisis, and the organisation supported staff by matching the Local Authority pay rise.
- Systems Change continued to play an important role in our approach - challenging the systems that often hold families stuck in place. For example, Making it Work for Families have worked with Poverty Alliance to co-produce and launch a Stigma Toolkit.

In addition to these key achievements the organisation has continued to develop our projects to ensure they meet the changing needs of families.

#### **Our Projects**

- Making it Work for lone parents supports lone parents on their journey towards employment and is working to introduce Multiply funding/activity to grow the skills and confidence of lone parent families. (Delivered in partnership with CARF.)
- Making it Work for families engages families affected by substance use with a S1/S2 pupil living at home who's struggling to attend or engage in School. The team are working to enhance the project with funding support from Whole Family Wellbeing Fund to strengthen social work relationships and include P7 transition pupils. (Delivered in partnership with CARF, Clued Up and FIRST.)
- Early Years Collective works with families where there is a 0-8 year old at home with identified wellbeing concerns. (Delivered in partnership with Home-Starts and The Cottage Family Centre.)
- Lone Parent Advice Line is available to any lone parent living in Fife and offers information and guidance to families including signposting and crisis support.

Volunteering underpins our approach and buddying plays a particularly important role to overcome barriers for isolated families.

The projects are delivered flexibly, and a range of activities are facilitated such as:

- 1:1 emotional support for parents/carers (including home visits)
- Group work, holiday activities and family learning opportunities
- Advice, information and signposting
- Advocacy and representation
- Volunteering opportunities and buddy support for families
- Co-production and collaboration
- Partnership working with like-minded organisations and practitioners locally
- Representation at policy decision level

Fife Gingerbread has a diverse portfolio of funding to support the continued delivery of projects. The main funders include Fife Council, Opportunities Fife Partnership, E & SE City Region Deal,

---

# Fife Gingerbread

Company Limited by Guarantee

Trustees' Annual Report (Incorporating the Directors' Report) *(continued)*

Year ended 31 March 2023

## Our Projects *(continued)*

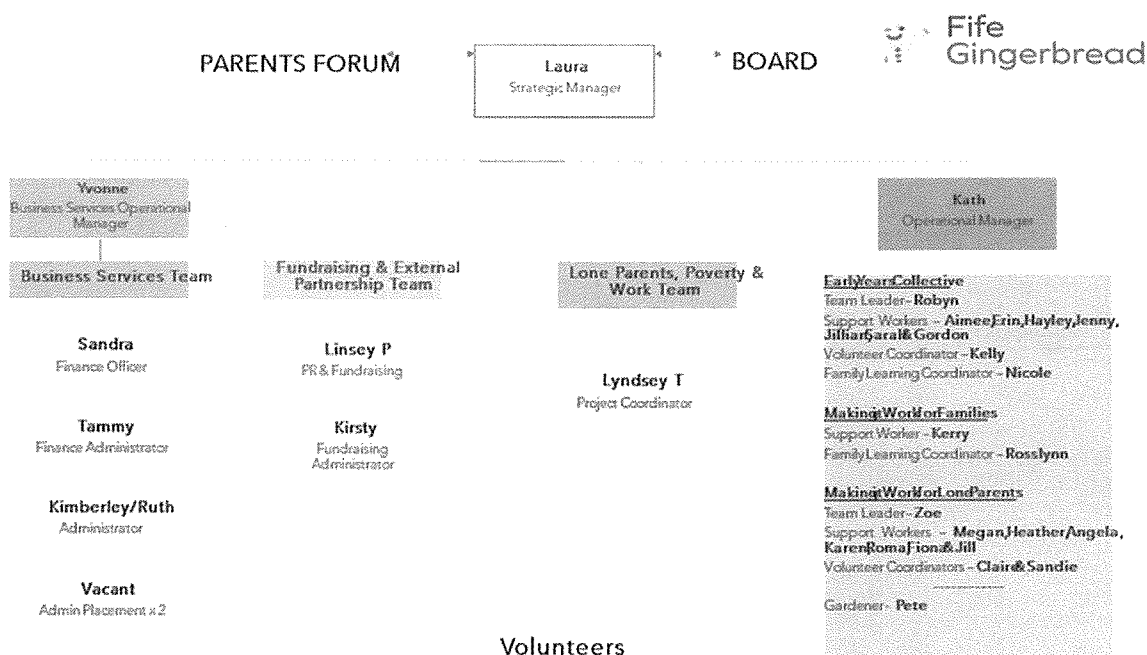
Robertson Trust and a range of other smaller grants. We are grateful for the continued trust and support of all of our funders, and the donations made by businesses, community groups and individuals in Fife through our fundraising strategy.

## Performance

Over the last year the organisation is proud to share some key outputs and activities that highlight the success and scale of activity locally:

- Received 400 new referrals last year of which 83% were lone parent families
- Supported 667 families with 1036 children and young people living at home
- Empowered 104 parents to progress into work, education or training opportunities
- Received 48 enquiries from lone parents through our Advice Line
- 36 volunteers were active and contributed 1780 hours to the organisation
- Raised £24,231.90 for Heat & Eat appeal and £5,835.05 through Day2Play campaign
- Processed 293 Heat & Eat requests provided food, fuel & festive packages to families in need

## Organisational Structure



# Fife Gingerbread

## Company Limited by Guarantee

### Trustees' Annual Report (Incorporating the Directors' Report) *(continued)*

Year ended 31 March 2023

---

#### Financial review

The organisation works hard to identify methods of delivering services, while diversifying and reducing the dependence on any one particular funder. There are robust processes and controls to ensure appropriate operational and financial reporting and monitoring are in place. The organisation has monitored and amended staffing levels where appropriate, and is ready for the year ahead.

Funding is secured for projects over its lifespan, where possible. The deemed start and end dates of projects are not necessarily concurrent with Fife Gingerbread's financial year. Therefore, although project income is evenly spread out over the lifespan of projects, project expenditure is planned and allocated in various amounts throughout the same period. In the accounts at the financial year end, this may be presented as a temporary surplus or deficit in funds, however project funds are tightly controlled, and planned in to be fully spent by the end of the project.

#### Principal Funding Resources

Fife Council is the primary funder for the Early Years Collective, and this is supported by Children in Need, RS McDonald, Volant Trust and others. The main funder for Making it Work lone parents continues to be Opportunities Fife Partnership who administer Fife Council, NOLB and ESIF funding. Making it Work for Families is primarily funded through Capital City Partnership with support from Gannochy Trust and others.

#### National and Local Policies

Fife Gingerbread's work links into many of the Local and National policies, key themes and priorities. Child Poverty continues to be a major driver for change, with the new Tackling Child Poverty Delivery Plan (Best Start, Bright Future) published this year focusing on 2022-26.

#### Investment Policy

Funding is identified for specific projects and therefore spending has to comply with budget projections. Interest payments are invested in organisation resources.

#### Reserves Policy

The organisation currently holds cash reserves in line with OSCR recommendations, to support service users, project operations, staff salaries, and other organisational expenditure in the event of funding difficulties.

#### Plans for future periods

The organisation constantly plans and reviews the level of funding and service delivery and its fit with national and local needs. Funding streams have been identified to secure staff/services for 2023/24.

# Fife Gingerbread

## Company Limited by Guarantee

### Trustees' Annual Report (Incorporating the Directors' Report) *(continued)*

Year ended 31 March 2023

---

#### Trustees' responsibilities statement

The trustees, who are also directors for the purposes of company law, are responsible for preparing the trustees' report and the financial statements in accordance with applicable law and United Kingdom Accounting Standards (United Kingdom Generally Accepted Accounting Practice).

Company law requires the charity trustees to prepare financial statements for each year which give a true and fair view of the state of affairs of the charitable company and the incoming resources and application of resources, including the income and expenditure, for that period.

In preparing these financial statements, the trustees are required to:

- select suitable accounting policies and then apply them consistently;
- observe the methods and principles in the applicable Charities SORP;
- make judgments and accounting estimates that are reasonable and prudent;
- state whether applicable UK Accounting Standards have been followed, subject to any material departures disclosed and explained in the financial statements;
- prepare the financial statements on the going concern basis unless it is inappropriate to presume that the charity will continue in business.

The trustees are responsible for keeping adequate accounting records that are sufficient to show and explain the charity's transactions and disclose with reasonable accuracy at any time the financial position of the charity and enable them to ensure that the financial statements comply with the Companies Act 2006. They are also responsible for safeguarding the assets of the charity and hence for taking reasonable steps for the prevention and detection of fraud and other irregularities.

In so far as the trustees are aware:-

- there is no relevant audit information of which the charitable company's auditor is unaware, and
- the trustees have taken all the steps that they ought to have taken to make themselves aware of any relevant audit information and to establish that the auditor is aware of that information.

The trustees are responsible for the maintenance and integrity of the corporate and financial information included on the charitable company's website. Legislation in the United Kingdom governing the preparation and dissemination of financial statements may differ from legislation in other jurisdictions.

#### Auditor

Each of the persons who is a trustee at the date of approval of this report confirms that:

- so far as they are aware, there is no relevant audit information of which the charity's auditor is unaware; and
-

# Fife Gingerbread

## Company Limited by Guarantee

### Trustees' Annual Report (Incorporating the Directors' Report) *(continued)*

Year ended 31 March 2023

---

- they have taken all steps that they ought to have taken as a trustee to make themselves aware of any relevant audit information and to establish that the charity's auditor is aware of that information.

The auditor is deemed to have been re-appointed in accordance with section 487 of the Companies Act 2006.

#### **Small company provisions**

This report has been prepared in accordance with the provisions applicable to companies entitled to the small companies exemption.

The trustees' annual report (incorporating the directors' report) was approved on 22 September 2023 and signed on behalf of the board of trustees by:



Lisa Bray  
Trustee

# Fife Gingerbread

## Company Limited by Guarantee

### Independent Auditor's Report to the Members of Fife Gingerbread

Year ended 31 March 2023

---

#### Opinion

We have audited the financial statements of Fife Gingerbread (the 'charity') for the year ended 31 March 2023 which comprise the statement of financial activities (including income and expenditure account), statement of financial position, statement of cash flows and the related notes, including a summary of significant accounting policies. The financial reporting framework that has been applied in their preparation is applicable law and United Kingdom Accounting Standards, including FRS 102 The Financial Reporting Standard applicable in the UK and Republic of Ireland (United Kingdom Generally Accepted Accounting Practice).

In our opinion the financial statements:

- give a true and fair view of the state of the charity's affairs as at 31 March 2023 and of its incoming resources and application of resources, including its income and expenditure, for the year then ended;
- have been properly prepared in accordance with United Kingdom Generally Accepted Accounting Practice;
- have been prepared in accordance with the requirements of the Companies Act 2006, the Charities and Trustee Investment (Scotland) Act 2005 and regulation 8 of the Charities Accounts (Scotland) Regulations 2006 (as amended).

#### Basis for opinion

We conducted our audit in accordance with International Standards on Auditing (UK) (ISAs (UK)) and applicable law. Our responsibilities under those standards are further described in the auditor's responsibilities for the audit of the financial statements section of our report. We are independent of the charity in accordance with the ethical requirements that are relevant to our audit of the financial statements in the UK, including the FRC's Ethical Standard, and we have fulfilled our other ethical responsibilities in accordance with these requirements. We believe that the audit evidence we have obtained is sufficient and appropriate to provide a basis for our opinion.

#### Conclusions relating to going concern

In auditing the financial statements, we have concluded that the trustees' use of the going concern basis of accounting in the preparation of the financial statements is appropriate.

Based on the work we have performed, we have not identified any material uncertainties relating to events or conditions that, individually or collectively, may cast significant doubt on the charity's ability to continue as a going concern for a period of at least twelve months from when the financial statements are authorised for issue.

Our responsibilities and the responsibilities of the trustees with respect to going concern are described in the relevant sections of this report.

---

# Fife Gingerbread

## Company Limited by Guarantee

### Independent Auditor's Report to the Members of Fife Gingerbread *(continued)*

Year ended 31 March 2023

---

#### Other information

The other information comprises the information included in the annual report, other than the financial statements and our auditor's report thereon. The trustees are responsible for the other information. Our opinion on the financial statements does not cover the other information and, except to the extent otherwise explicitly stated in our report, we do not express any form of assurance conclusion thereon.

In connection with our audit of the financial statements, our responsibility is to read the other information and, in doing so, consider whether the other information is materially inconsistent with the financial statements or our knowledge obtained in the audit or otherwise appears to be materially misstated. If we identify such material inconsistencies or apparent material misstatements, we are required to determine whether there is a material misstatement in the financial statements or a material misstatement of the other information. If, based on the work we have performed, we conclude that there is a material misstatement of this other information, we are required to report that fact.

We have nothing to report in this regard.

#### Opinions on other matters prescribed by the Companies Act 2006

In our opinion, based on the work undertaken in the course of the audit:

- the information given in the trustees' report for the financial year for which the financial statements are prepared is consistent with the financial statements; and
- the trustees' report has been prepared in accordance with applicable legal requirements.

#### Matters on which we are required to report by exception

In the light of the knowledge and understanding of the charity and its environment obtained in the course of the audit, we have not identified material misstatements in the trustees' report.

We have nothing to report in respect of the following matters in relation to which the Companies Act 2006 and the Charities Accounts (Scotland) Regulations 2006 (as amended) requires us to report to you if, in our opinion:

- adequate accounting records have not been kept, or returns adequate for our audit have not been received from branches not visited by us; or
  - the financial statements are not in agreement with the accounting records and returns; or
  - certain disclosures of trustees' remuneration specified by law are not made; or
  - we have not received all the information and explanations we require for our audit; or
  - the trustees were not entitled to take advantage of the small companies' exemptions in preparing the directors' report and from the requirement to prepare a strategic report.
-

# Fife Gingerbread

## Company Limited by Guarantee

### Independent Auditor's Report to the Members of Fife Gingerbread *(continued)*

Year ended 31 March 2023

---

#### Responsibilities of trustees

As explained more fully in the trustees' responsibilities statement, the trustees (who are also the directors for the purposes of company law) are responsible for the preparation of the financial statements and for being satisfied that they give a true and fair view, and for such internal control as the trustees determine is necessary to enable the preparation of financial statements that are free from material misstatement, whether due to fraud or error.

In preparing the financial statements, the trustees are responsible for assessing the charity's ability to continue as a going concern, disclosing, as applicable, matters related to going concern and using the going concern basis of accounting unless the trustees either intend to liquidate the charity or to cease operations, or have no realistic alternative but to do so.

#### Auditor's responsibilities for the audit of the financial statements

We have been appointed as auditor under section 44(1)(c) of the Charities and Trustee Investment (Scotland) Act 2005 and under the Companies Act 2006 and report in accordance with the Acts and relevant regulations made or having effect thereunder.

Our objectives are to obtain reasonable assurance about whether the financial statements as a whole are free from material misstatement, whether due to fraud or error, and to issue an auditor's report that includes our opinion. Reasonable assurance is a high level of assurance, but is not a guarantee that an audit conducted in accordance with ISAs (UK) will always detect a material misstatement when it exists. Misstatements can arise from fraud or error and are considered material if, individually or in the aggregate, they could reasonably be expected to influence the economic decisions of users taken on the basis of these financial statements.

Irregularities, including fraud, are instances of non-compliance with laws and regulations. We design procedures in line with our responsibilities, outlined above, to detect material misstatements in respect of irregularities, including fraud. The extent to which our procedures are capable of detecting irregularities, including fraud is detailed below:

Based on our understanding of the charity and industry, we identified that the principal risks of non-compliance with laws and regulations related to breaches of UK regulations and prohibited business practices, and we considered that the extent to which non-compliance might have a material effect on the financial statements. We also considered those laws and regulations that have a direct impact on the preparation of the financial statements such as the Companies Act 2006. We evaluated management's incentives and opportunities for fraudulent manipulation of the financial statements (including the risk of override controls), and determined that the principal risks were related to the potential posting of inappropriate journal entries to manipulate financial results and management bias in accounting estimates.

Audit procedures performed by the engagement team included:

- Enquiry of management and those charged with governance around actual and potential litigation and claims.



# Fife Gingerbread

## Company Limited by Guarantee

### Independent Auditor's Report to the Members of Fife Gingerbread *(continued)*

Year ended 31 March 2023

---

- Reviewing minutes of meetings of those charged with governance including the Board.
- Evaluation and testing of the operating effectiveness of management's controls designed to prevent and detect irregularities.
- Identifying and testing journal entries based on risk criteria.
- Designing audit procedures to incorporate unpredictability around the nature, timing or extent of our testing.
- Performed analytical review and sample testing of income.
- Agreed financial statement disclosures to supporting documentation.

There are inherent limitations in the audit procedures described above. We are less likely to become aware of instances of non-compliance with laws and regulations that are not closely related to events and transactions reflected in the financial statements.

As part of an audit in accordance with ISAs (UK), we exercise professional judgment and maintain professional scepticism throughout the audit. We also:

- Identify and assess the risks of material misstatement of the financial statements, whether due to fraud or error, design and perform audit procedures responsive to those risks, and obtain audit evidence that is sufficient and appropriate to provide a basis for our opinion. The risk of not detecting a material misstatement resulting from fraud is higher than for one resulting from error, as fraud may involve collusion, forgery, intentional omissions, misrepresentations, or the override of internal control.
- Obtain an understanding of internal control relevant to the audit in order to design audit procedures that are appropriate in the circumstances, but not for the purpose of expressing an opinion on the effectiveness of the internal control.
- Evaluate the appropriateness of accounting policies used and the reasonableness of accounting estimates and related disclosures made by the trustees.
- Conclude on the appropriateness of the trustees' use of the going concern basis of accounting and, based on the audit evidence obtained, whether a material uncertainty exists related to events or conditions that may cast significant doubt on the charity's ability to continue as a going concern. If we conclude that a material uncertainty exists, we are required to draw attention in our auditor's report to the related disclosures in the financial statements or, if such disclosures are inadequate, to modify our opinion. Our conclusions are based on the audit evidence obtained up to the date of our auditor's report. However, future events or conditions may cause the charity to cease to continue as a going concern.
- Evaluate the overall presentation, structure and content of the financial statements, including the disclosures, and whether the financial statements represent the underlying transactions and events in a manner that achieves fair presentation.

We communicate with those charged with governance regarding, among other matters, the planned scope and timing of the audit and significant audit findings, including any significant deficiencies in internal control that we identify during our audit.

A further description of our responsibilities is available on the Financial Reporting Council's website at [www.frc.org.uk/auditorsresponsibilities](http://www.frc.org.uk/auditorsresponsibilities). This description forms part of our auditor's report.

---

# Fife Gingerbread

Company Limited by Guarantee

Independent Auditor's Report to the Members of Fife Gingerbread *(continued)*

Year ended 31 March 2023

---

## Use of our report

This report is made solely to the charity's members, as a body, in accordance with Regulation 10 of the Charities Accounts (Scotland) Regulations 2006. Our audit work has been undertaken so that we might state to the charity's members those matters we are required to state to them in an auditor's report and for no other purpose. To the fullest extent permitted by law, we do not accept or assume responsibility to anyone other than the charity and the charity's members as a body, for our audit work, for this report, or for the opinions we have formed.



Neil Paterson B.A., C.A (Senior Statutory Auditor)

For and on behalf of  
PB Audit Limited  
Registered Auditors  
18 North Street  
Glenrothes  
Fife  
KY7 5NA

PB Audit Limited are eligible to act as auditors under the terms of Section 1212 of the Companies Act 2006.

22 September 2023

# Fife Gingerbread

## Company Limited by Guarantee

### Statement of Financial Activities (including income and expenditure account)

Year ended 31 March 2023

		2023		2022	
	Note	Unrestricted funds £	Restricted funds £	Total funds £	Total funds £
<b>Income and endowments</b>					
Donations and legacies	5	18,045	24,633	<b>42,678</b>	53,627
Charitable activities	6	51,392	1,013,914	<b>1,065,306</b>	1,039,643
Other trading activities	7	11,123	1,434	<b>12,557</b>	6,268
Investment income	8	496	–	<b>496</b>	11
<b>Total income</b>		<u>81,056</u>	<u>1,039,981</u>	<u><b>1,121,037</b></u>	<u>1,099,549</u>
<b>Expenditure</b>					
Expenditure on raising funds:					
Costs of raising donations and legacies	9	1,066	263	<b>1,329</b>	517
Expenditure on charitable activities	10,11	46,599	1,019,495	<b>1,066,094</b>	991,034
<b>Total expenditure</b>		<u>47,665</u>	<u>1,019,758</u>	<u><b>1,067,423</b></u>	<u>991,551</u>
<b>Net income</b>		<u>33,391</u>	<u>20,223</u>	<u><b>53,614</b></u>	<u>107,998</u>
Transfers between funds		(1,338)	1,338	–	–
<b>Net movement in funds</b>		<u>32,053</u>	<u>21,561</u>	<u><b>53,614</b></u>	<u>107,998</u>
<b>Reconciliation of funds</b>					
Total funds brought forward		417,409	260,108	<b>677,517</b>	569,519
<b>Total funds carried forward</b>		<u>449,462</u>	<u>281,669</u>	<u><b>731,131</b></u>	<u>677,517</u>

The statement of financial activities includes all gains and losses recognised in the year. All income and expenditure derive from continuing activities.

The notes on pages 20 to 41 form part of these financial statements.

**Fife Gingerbread**  
**Company Limited by Guarantee**  
**Statement of Financial Position**

**31 March 2023**

	Note	2023 £	2022 £
<b>Fixed assets</b>			
Tangible fixed assets	17	4,146	4,876
<b>Current assets</b>			
Debtors	18	234,634	221,471
Cash at bank and in hand		601,581	597,738
		<u>836,215</u>	<u>819,209</u>
<b>Creditors: amounts falling due within one year</b>	19	109,230	146,568
<b>Net current assets</b>		<u>726,985</u>	<u>672,641</u>
<b>Total assets less current liabilities</b>		<u>731,131</u>	<u>677,517</u>
<b>Net assets</b>		<u>731,131</u>	<u>677,517</u>
<b>Funds of the charity</b>			
Restricted funds		281,669	260,108
Unrestricted funds		449,462	417,409
<b>Total charity funds</b>	22	<u>731,131</u>	<u>677,517</u>

These financial statements have been prepared in accordance with the provisions applicable to companies subject to the small companies' regime.

These financial statements were approved by the board of trustees and authorised for issue on 22 September 2023, and are signed on behalf of the board by:



Lisa Bray  
Trustee

The notes on pages 20 to 41 form part of these financial statements.

**Fife Gingerbread**  
**Company Limited by Guarantee**  
**Statement of Cash Flows**  
**Year ended 31 March 2023**

	2023	2022
	£	£
<b>Cash flows from operating activities</b>		
Net income	53,614	107,998
<i>Adjustments for:</i>		
Depreciation of tangible fixed assets	9,022	4,875
Other interest receivable and similar income	(496)	(11)
Interest payable and similar charges	4,005	963
Accrued income	(32,913)	(57,922)
<i>Changes in:</i>		
Trade and other debtors	(13,163)	81,789
Trade and other creditors	(4,425)	1,298
Cash generated from operations	<u>15,644</u>	<u>138,990</u>
Interest paid	(4,005)	(963)
Interest received	496	11
Net cash from operating activities	<u>12,135</u>	<u>138,038</u>
<b>Cash flows from investing activities</b>		
Purchase of tangible assets	(8,292)	(9,750)
Net cash used in investing activities	<u>(8,292)</u>	<u>(9,750)</u>
<b>Net increase in cash and cash equivalents</b>	<b>3,843</b>	<b>128,288</b>
<b>Cash and cash equivalents at beginning of year</b>	<b>597,738</b>	<b>469,450</b>
<b>Cash and cash equivalents at end of year</b>	<b><u>601,581</u></b>	<b><u>597,738</u></b>

The notes on pages 20 to 41 form part of these financial statements.

# Fife Gingerbread

## Company Limited by Guarantee

### Notes to the Financial Statements

Year ended 31 March 2023

---

#### 1. General information

The charity is a public benefit entity and a private company limited by guarantee, registered in Scotland and a registered charity in Scotland. The address of the registered office is Unit 9, Craig Mitchell House, Flemington Road, Glenrothes, Fife, Scotland, KY7 5QF.

#### 2. Statement of compliance

These financial statements have been prepared in compliance with FRS 102, 'The Financial Reporting Standard applicable in the UK and the Republic of Ireland', the Statement of Recommended Practice applicable to charities preparing their accounts in accordance with the Financial Reporting Standard applicable in the UK and Republic of Ireland (FRS 102) (Charities SORP (FRS 102)) and the Companies Act 2006.

#### 3. Accounting policies

##### Basis of preparation

The financial statements have been prepared on the historical cost basis, as modified by the revaluation of certain financial assets and liabilities are measured at fair value through income or expenditure.

##### Going concern

There are no material uncertainties about the charity's ability to continue.

##### Judgements and key sources of estimation uncertainty

The preparation of the financial statements requires management to make judgements, estimates and assumptions that affect the amounts reported. These estimates and judgements are continually reviewed and are based on experience and other factors, including expectations of future events that are believed to be reasonable under the circumstances.

##### Taxation

The charity is exempt from tax on income and gains falling within section 505(1) of the Taxes Act 1988 or section 252 of the Taxation of Chargeable Gains Act 1992 to the extent that these are applied to its charitable objects.

# Fife Gingerbread

## Company Limited by Guarantee

### Notes to the Financial Statements *(continued)*

Year ended 31 March 2023

---

#### 3. Accounting policies *(continued)*

##### **Fund accounting**

Unrestricted funds are available for use at the discretion of the trustees to further any of the charity's purposes.

Designated funds are unrestricted funds earmarked by the trustees for particular future project or commitment.

Restricted funds are subjected to restrictions on their expenditure declared by the donor or through the terms of an appeal, and fall into one of two sub-classes: restricted income funds or endowment funds.

##### **Incoming resources**

All incoming resources are included in the statement of financial activities when entitlement has passed to the charity; it is probable that the economic benefits associated with the transaction will flow to the charity and the amount can be reliably measured. The following specific policies are applied to particular categories of income:

- income from donations or grants is recognised when there is evidence of entitlement to the gift, receipt is probable and its amount can be measured reliably.
- legacy income is recognised when receipt is probable and entitlement is established.
- income from donated goods is measured at the fair value of the goods unless this is impractical to measure reliably, in which case the value is derived from the cost to the donor or the estimated resale value. Donated facilities and services are recognised in the accounts when received if the value can be reliably measured. No amounts are included for the contribution of general volunteers.
- income from contracts for the supply of services is recognised with the delivery of the contracted service. This is classified as unrestricted funds unless there is a contractual requirement for it to be spent on a particular purpose and returned if unspent, in which case it may be regarded as restricted.

# Fife Gingerbread

## Company Limited by Guarantee

### Notes to the Financial Statements *(continued)*

Year ended 31 March 2023

---

#### 3. Accounting policies *(continued)*

##### Resources expended

Expenditure is recognised on an accruals basis as a liability is incurred. Expenditure includes any VAT which cannot be fully recovered, and is classified under headings of the statement of financial activities to which it relates:

- expenditure on raising funds includes the costs of all fundraising activities, events, non-charitable trading activities, and the sale of donated goods.
- expenditure on charitable activities includes all costs incurred by a charity in undertaking activities that further its charitable aims for the benefit of its beneficiaries, including those support costs and costs relating to the governance of the charity apportioned to charitable activities.
- other expenditure includes all expenditure that is neither related to raising funds for the charity nor part of its expenditure on charitable activities.

All costs are allocated to expenditure categories reflecting the use of the resource. Direct costs attributable to a single activity are allocated directly to that activity. Shared costs are apportioned between the activities they contribute to on a reasonable, justifiable and consistent basis.

##### Operating leases

Lease payments are recognised as an expense over the lease term on a straight-line basis. The aggregate benefit of lease incentives is recognised as a reduction to expense over the lease term, on a straight-line basis.

##### Tangible assets

Tangible assets are initially recorded at cost, and subsequently stated at cost less any accumulated depreciation and impairment losses. Any tangible assets carried at revalued amounts are recorded at the fair value at the date of revaluation less any subsequent accumulated depreciation and subsequent accumulated impairment losses.

An increase in the carrying amount of an asset as a result of a revaluation, is recognised in other recognised gains and losses, unless it reverses a charge for impairment that has previously been recognised as expenditure within the statement of financial activities. A decrease in the carrying amount of an asset as a result of revaluation, is recognised in other recognised gains and losses, except to which it offsets any previous revaluation gain, in which case the loss is shown within other recognised gains and losses on the statement of financial activities.



# Fife Gingerbread

## Company Limited by Guarantee

### Notes to the Financial Statements *(continued)*

Year ended 31 March 2023

---

#### 3. Accounting policies *(continued)*

##### Depreciation

Depreciation is calculated so as to write off the cost or valuation of an asset, less its residual value, over the useful economic life of that asset as follows:

Fixtures and fittings - 50% straight line

##### Impairment of fixed assets

A review for indicators of impairment is carried out at each reporting date, with the recoverable amount being estimated where such indicators exist. Where the carrying value exceeds the recoverable amount, the asset is impaired accordingly. Prior impairments are also reviewed for possible reversal at each reporting date.

For the purposes of impairment testing, when it is not possible to estimate the recoverable amount of an individual asset, an estimate is made of the recoverable amount of the cash-generating unit to which the asset belongs.

##### Financial instruments

The charity only has financial assets and financial liabilities of a kind that qualify as basic financial instruments. Basic financial instruments are initially recognised at transaction value and subsequently measured at their settlement value with the exception of bank loans which are subsequently measured at the carrying value plus accrued interest less repayments. The financing charge to expenditure is at a constant rate calculated using the effective interest method.

#### 4. Limited by guarantee

The charity is a company limited by guarantee without share capital. Each member of the charity has undertaken to contribute an amount not exceeding £1 towards any deficit arising in the event of the charity being placed in liquidation. At the balance sheet date the charity had 9 members.

#### 5. Donations and legacies

	Unrestricted Funds £	Restricted Funds £	Total Funds 2023 £
Donations	18,045	24,633	42,678

---

# Fife Gingerbread

## Company Limited by Guarantee

### Notes to the Financial Statements *(continued)*

Year ended 31 March 2023

#### 5. Donations and legacies *(continued)*

	Unrestricted Funds £	Restricted Funds £	Total Funds 2022 £
<b>Donations</b>			
Donations	<u>20,856</u>	<u>32,771</u>	<u>53,627</u>

#### 6. Charitable activities

	Unrestricted Funds £	Restricted Funds £	Total Funds 2023 £
Fife Council Service Level Agreement	–	215,599	<b>215,599</b>
ESIF – Making it Work II	–	(8,973)	<b>(8,973)</b>
Fife Council Multiply - Making it Work F	–	17,544	<b>17,544</b>
Fife Council - Whole Family Wellbeing Fund	–	19,573	<b>19,573</b>
Fife Council – Local Area Budgets	–	–	–
Fife Council – Teen Parent Project	–	–	–
Fife Council – Lacer	–	26,271	<b>26,271</b>
Robertson Trust	43,700	–	<b>43,700</b>
Community Jobs	–	6,549	<b>6,549</b>
Opportunities Fife Partnership	–	372,891	<b>372,891</b>
Gannochy Trust (MIW FF)	–	16,473	<b>16,473</b>
Cash for Kids (Holiday Hunger)	–	20,800	<b>20,800</b>
Big Lottery - Volunteer Buddy Network	–	–	–
Big Lottery	–	15,267	<b>15,267</b>
Chance to Flourish	–	–	–
BBC Children In Need	–	38,426	<b>38,426</b>
Fife Council MIWLP SLA	–	60,000	<b>60,000</b>
Other grants	7,692	30,608	<b>38,300</b>
Capital City Partnership - MIWFF	–	140,000	<b>140,000</b>
Glenwood High School - MIWF	–	–	–
Kickstart	–	621	<b>621</b>
Foundation Scotland Volant Trust	–	15,000	<b>15,000</b>
ILM Placements	–	11,265	<b>11,265</b>
RS MacDonald	–	12,000	<b>12,000</b>
Scottish Children's Lottery	–	4,000	<b>4,000</b>
	<u>51,392</u>	<u>1,013,914</u>	<u><b>1,065,306</b></u>

# Fife Gingerbread

## Company Limited by Guarantee

### Notes to the Financial Statements *(continued)*

Year ended 31 March 2023

#### 6. Charitable activities *(continued)*

	Unrestricted Funds £	Restricted Funds £	Total Funds 2022 £
Fife Council Service Level Agreement	–	94,591	94,591
ESIF – Making it Work II	–	46,988	46,988
Fife Council Multiply - Making it Work F	–	–	–
Fife Council - Whole Family Wellbeing Fund	–	–	–
FSF – Making it Work II	–	–	–
Fife Council – Local Area Budgets	–	107,935	107,935
Fife Council – Teen Parent Project	–	122,760	122,760
Fife Council – Lacer	–	–	–
Robertson Trust	38,000	–	38,000
Community Jobs	–	6,602	6,602
Opportunities Fife Partnership	–	299,255	299,255
Gannochy Trust (MIW FF)	–	20,000	20,000
Cash for Kids (Holiday Hunger)	–	3,000	3,000
Big Lottery - Volunteer Buddy Network	–	17,868	17,868
Big Lottery	–	13,750	13,750
Chance to Flourish	–	10,000	10,000
BBC Children In Need	–	39,097	39,097
Fife Council MIWLP SLA	–	–	–
Other grants	–	27,996	27,996
Capital City Partnership - MIWFF	–	145,000	145,000
Glenwood High School - MIWF	–	10,000	10,000
Kickstart	–	13,253	13,253
Foundation Scotland Volant Trust	–	6,250	6,250
ILM Placements	–	5,298	5,298
RS MacDonald	–	12,000	12,000
Scottish Children's Lottery	–	–	–
	<u>38,000</u>	<u>1,001,643</u>	<u>1,039,643</u>

# Fife Gingerbread

## Company Limited by Guarantee

### Notes to the Financial Statements *(continued)*

Year ended 31 March 2023

#### 7. Other trading activities

	Unrestricted Funds £	Restricted Funds £	Total Funds 2023 £
General fund raising	3,054	1,434	4,488
Room Hire	5,360	–	5,360
Other income	252	–	252
Training income	2,457	–	2,457
	<u>11,123</u>	<u>1,434</u>	<u>12,557</u>

	Unrestricted Funds £	Restricted Funds £	Total Funds 2022 £
General fund raising	61	1,794	1,855
Room Hire	2,121	–	2,121
Other income	240	–	240
Training income	2,052	–	2,052
	<u>4,474</u>	<u>1,794</u>	<u>6,268</u>

#### 8. Investment income

	Unrestricted Funds £	Total Funds 2023 £	Unrestricted Funds £	Total Funds 2022 £
Bank interest receivable	<u>496</u>	<u>496</u>	<u>11</u>	<u>11</u>

#### 9. Costs of raising donations and legacies

	Unrestricted Funds £	Restricted Funds £	Total Funds 2023 £
Costs of raising donations and legacies - Donations	<u>1,066</u>	<u>263</u>	<u>1,329</u>

	Unrestricted Funds £	Restricted Funds £	Total Funds 2022 £
Costs of raising donations and legacies - Donations	<u>457</u>	<u>60</u>	<u>517</u>

# Fife Gingerbread

## Company Limited by Guarantee

### Notes to the Financial Statements *(continued)*

Year ended 31 March 2023

#### 10. Expenditure on charitable activities by fund type

	Unrestricted Funds £	Restricted Funds £	Total Funds 2023 £
Direct charitable activities	46,469	957,002	<b>1,003,471</b>
Support costs	130	62,493	<b>62,623</b>
	<u>46,599</u>	<u>1,019,495</u>	<u><b>1,066,094</b></u>

	Unrestricted Funds £	Restricted Funds £	Total Funds 2022 £
Direct charitable activities	19,908	915,568	935,475
Support costs	3,173	52,385	55,559
	<u>23,081</u>	<u>967,953</u>	<u>991,034</u>

#### 11. Expenditure on charitable activities by activity type

	Activities undertaken directly £	Support costs £	Total funds 2023 £	Total fund 2022 £
Direct charitable activities	1,003,471	57,868	<b>1,061,339</b>	986,880
Governance costs	–	4,755	<b>4,755</b>	4,154
	<u>1,003,471</u>	<u>62,623</u>	<u><b>1,066,094</b></u>	<u>991,034</u>

#### 12. Analysis of support costs

	Analysis of support costs £	Total 2023 £	Total 2022 £
Premises	41,790	<b>41,790</b>	40,393
Communications and IT	883	<b>883</b>	815
Finance costs	4,005	<b>4,005</b>	963
Governance costs	4,755	<b>4,755</b>	4,154
Publicity/Marketing	4,795	<b>4,795</b>	3,574
Subscriptions & publications	6,119	<b>6,119</b>	5,169
Management costs	276	<b>276</b>	491
	<u>62,623</u>	<u><b>62,623</b></u>	<u>55,559</u>

# Fife Gingerbread

## Company Limited by Guarantee

### Notes to the Financial Statements *(continued)*

Year ended 31 March 2023

---

#### 13. Net income

Net income is stated after charging/(crediting):

	2023	2022
	£	£
Depreciation of tangible fixed assets	<u>9,022</u>	<u>4,875</u>

#### 14. Auditor's remuneration

	2023	2022
	£	£
Fees payable for the audit of the financial statements	<u>3,969</u>	<u>3,600</u>
Fees payable to the charity's auditor and its associates for other services: Other non-audit services	<u>31</u>	<u>31</u>

#### 15. Staff costs

The total staff costs and employee benefits for the reporting period are analysed as follows:

	2023	2022
	£	£
Wages and salaries	686,658	596,425
Social security costs	52,654	43,051
Employer contributions to pension plans	14,000	11,700
	<u>753,312</u>	<u>651,176</u>

The average head count of employees during the year was 33 (2022: 29).

No employee received employee benefits of more than £60,000 during the year (2022: Nil).

#### Key Management Personnel

Key management personnel include all persons that have authority and responsibility for planning, directing and controlling the activities of the charity. The total compensation paid to key management personnel for services provided to the charity was £129,368 (2022: £121,572).

#### 16. Trustee remuneration and expenses

No remuneration or other benefits from employment with the charity or a related entity were received by the trustees.

During the year no payments for reimbursement of expenditure were made to any member of the Board of Trustees.

---

# Fife Gingerbread

Company Limited by Guarantee

Notes to the Financial Statements *(continued)*

Year ended 31 March 2023

## 17. Tangible fixed assets

	Fixtures and fittings £
<b>Cost</b>	
At 1 Apr 2022	28,335
Additions	8,292
<b>At 31 Mar 2023</b>	<b>36,627</b>
<b>Depreciation</b>	
At 1 Apr 2022	23,459
Charge for the year	9,022
<b>At 31 Mar 2023</b>	<b>32,481</b>
<b>Carrying amount</b>	
<b>At 31 Mar 2023</b>	<b>4,146</b>
At 31 Mar 2022	4,876

## 18. Debtors

	2023 £	2022 £
Trade debtors	4,729	3,540
Prepayments and accrued income	4,226	3,252
Other debtors	225,679	214,679
	<b>234,634</b>	<b>221,471</b>

## 19. Creditors: amounts falling due within one year

	2023 £	2022 £
Trade creditors	65	37,073
Accruals and deferred income	89,328	90,237
Social security and other taxes	11,836	11,739
Other creditors	8,001	7,519
	<b>109,230</b>	<b>146,568</b>

# Fife Gingerbread

## Company Limited by Guarantee

### Notes to the Financial Statements *(continued)*

Year ended 31 March 2023

#### 20. Deferred income

	2023	2022
	£	£
At 1 April 2022	<b>23,621</b>	53,547
Amount released to income	<b>(23,621)</b>	(53,547)
Amount deferred in year	<b>55,625</b>	23,621
<b>At 31 March 2023</b>	<b>55,625</b>	23,621

Deferred income relates to funding which was received in advance for the year 2023/2024.

#### 21. Pensions and other post retirement benefits

##### Defined contribution plans

The amount recognised in income or expenditure as an expense in relation to defined contribution plans was £14,000 (2022: £11,700).

#### 22. Analysis of charitable funds

##### Unrestricted funds

	At 1 Apr 2022	Income	Expenditure	Transfers	At 31 Mar 2023
	£	£	£	£	£
General funds	407,451	77,256	(1,115)	(44,626)	<b>438,966</b>
Senior Team					
Discretionary Fund	7,285	–	(9,923)	13,045	<b>10,407</b>
Marketing Assistant	2,673	–	(962)	(1,711)	–
Project Co-ordinator	–	3,800	(35,665)	31,954	<b>89</b>
	<u>417,409</u>	<u>81,056</u>	<u>(47,665)</u>	<u>(1,338)</u>	<u><b>449,462</b></u>

	At 1 Apr 2021	Income	Expenditure	Transfers	At 31 Mar 2022
	£	£	£	£	£
General funds	405,520	62,841	(2,518)	(58,392)	407,451
Senior Team					
Discretionary Fund	–	500	(18,605)	25,390	7,285
Marketing Assistant	–	–	(2,327)	5,000	2,673
Project Co-ordinator	–	–	(88)	88	–
	<u>405,520</u>	<u>63,341</u>	<u>(23,538)</u>	<u>(27,914)</u>	<u>417,409</u>



# Fife Gingerbread

## Company Limited by Guarantee

### Notes to the Financial Statements *(continued)*

Year ended 31 March 2023

#### 22. Analysis of charitable funds *(continued)*

##### Restricted funds

	At 1 Apr 2022	Income	Expenditure	Transfers	At 31 Mar 2023
	£	£	£	£	£
Fife Council SLA	42,327	215,599	(236,147)	–	<b>21,779</b>
Chance to Flourish	306	–	(306)	–	–
Robertson Trust	18,000	–	(18,000)	–	–
RS MacDonald	337	12,000	(12,337)	–	–
Foundation Scotland					
Volant Trust	1,966	15,000	(16,966)	–	–
Community Jobs	3,650	6,549	(6,589)	–	<b>3,610</b>
ILM Placements	670	11,265	(11,935)	–	–
DWP	1,081	–	(1,081)	–	–
Fife Council - Multiply					
Funding	–	17,544	(14,568)	–	<b>2,976</b>
Day2Play -					
Donations/Fundraising	–	5,835	(5,769)	–	<b>66</b>
Big Lottery - Cost of					
Living	–	14,462	(8,931)	–	<b>5,531</b>
Fife Council - OFP Lone					
Parent Poverty in Work	–	50,000	(2,132)	–	<b>47,868</b>
Fife Council - Fife Teen					
Parents	38,889	–	(9,960)	–	<b>28,929</b>
Donation - Fife Teen					
Parents	8,000	–	–	–	<b>8,000</b>
Big Lottery Young Start -					
Fife Teen Parents	–	–	–	–	–
Small Grants	–	182	(182)	–	–
Children in Need - Fife					
Teen Parents	770	38,426	(39,195)	–	<b>1</b>
ESIF - Making it Work					
II/LP	–	(8,973)	–	–	<b>(8,973)</b>
OFP - Making it Work					
II/LP	–	–	–	–	–
Fife Council - Making it					
Work SLA LP	–	–	–	–	–
FC Local Areas - Making					
it Work II	–	–	–	–	–
Garfield Weston -					
Making it Work LP	–	–	–	–	–
Robertson Trust	280	–	–	–	<b>280</b>
Joseph Rowntree In					
work poverty - MIW LP	2,303	–	(1,166)	–	<b>1,137</b>

# Fife Gingerbread

## Company Limited by Guarantee

### Notes to the Financial Statements *(continued)*

Year ended 31 March 2023

#### 22. Analysis of charitable funds *(continued)*

Shell - Making it Work LP	1,000	–	–	–	1,000
DC Thomson/Northwood Donation- Making it Work LP	5,000	–	–	–	5,000
Fife Council Lacer - Child Maintenance	–	26,271	(21,390)	–	4,881
Fife Council - Whole Family Wellbeing Fund	–	19,573	(7,679)	–	11,894
Fife Council - Education Summer Activities	–	3,645	(3,645)	–	–
Mindful Bumps	–	407	–	–	407
Fife Council - Anti Poverty	–	200	–	–	200
Marie Reynolds Child Maintenance Campaign	1,499	–	–	–	1,499
Fife Council - Community Food	–	5,000	(1,408)	–	3,592
Fife Council - LA Summer in the Park	–	500	(274)	–	226
Fife Council - Making it Work for Families	5,465	–	(2,817)	–	2,648
Gannochy Trust	10,000	16,473	(23,630)	–	2,843
Capital City	14,616	140,000	(114,651)	–	39,965
Fife Council - PESF funding	4,500	11,250	(15,750)	–	–
New Park Donation	5,954	–	–	–	5,954
Glenwood High School Skills Development	10,000	–	–	–	10,000
Scotland	100	–	–	–	100
JS Hospital Fund	–	270	(270)	–	–
Fife Council - LP Urban Reiver	–	140	(140)	–	–
FVA - Social Creative Workshops	–	4,300	(4,300)	–	–
Fife Council SLA	–	60,000	(60,000)	–	–
Lottery AFA	–	–	–	–	–
Nu Track Donation	–	–	–	–	–
Nurturing Community Growth	3,027	–	(4,365)	1,338	–

# Fife Gingerbread

## Company Limited by Guarantee

### Notes to the Financial Statements *(continued)*

Year ended 31 March 2023

#### 22. Analysis of charitable funds *(continued)*

Big Lottery - Volunteer Buddy	–	–	–	–	–
Big Lottery - Lone Parent Advice					
Roadshow	–	805	(805)	–	–
Heat & Eat	27,697	24,232	(24,321)	–	<b>27,608</b>
Cash for Kids	–	–	–	–	–
FVA (Parent tablets)	–	–	–	–	–
Digital Boost (Laptops)	–	–	–	–	–
DIMA (Wkly Cooking Groups)	–	–	–	–	–
Cash for Kids	–	20,800	(18,425)	–	<b>2,375</b>
BBC Children in Need - Money Heroes	1,000	–	(545)	–	<b>455</b>
Fife Council - Glenrothes LA TTT Club	–	–	–	–	–
Sandy Brae	–	–	–	–	–
FVA - Explore Fife	2,827	–	(2,827)	–	–
FVA - Going Slow	2,800	(5,576)	2,776	–	–
FVA - Social Glenrothes	3,361	–	(3,229)	–	<b>132</b>
Fife Council - LA Summer Activities	–	–	–	–	–
Fife Council - LA Glenrothes TTT(JCB)	–	2,790	(2,225)	–	<b>565</b>
Fife Council - LA Levenmouth TTT groups	732	2,500	(2,579)	–	<b>653</b>
Fife Council - LA Glenrothes TTT (MC)	–	–	–	–	–
Scot Govt - Get into Summer	–	–	–	–	–
Exxon	–	–	–	–	–
Kickstart	391	621	(1,012)	–	–
Senior Team Discretionary	–	–	–	–	–
Family Grant	–	–	–	–	–
NOLB - OFP	41,560	322,891	(317,583)	–	<b>46,868</b>
Big Lottery	–	–	–	–	–
	<u>260,108</u>	<u>1,039,981</u>	<u>(1,019,758)</u>	<u>1,338</u>	<u><b>281,669</b></u>

# Fife Gingerbread

## Company Limited by Guarantee

### Notes to the Financial Statements *(continued)*

Year ended 31 March 2023

#### 22. Analysis of charitable funds *(continued)*

	At 1 Apr 2021	Income	Expenditure	Transfers	At 31 Mar 2022
	£	£	£	£	£
Fife Council SLA	14,623	217,351	(188,043)	(1,604)	42,327
Chance to Flourish	–	10,000	(9,694)	–	306
Robertson Trust	–	–	–	18,000	18,000
RS MacDonald	–	12,000	(11,663)	–	337
Foundation Scotland					
Volant Trust	–	6,250	(4,284)	–	1,966
Community Jobs	6,340	6,602	(9,292)	–	3,650
ILM Placements	–	5,298	(4,120)	(508)	670
DWP	–	3,152	(2,071)	–	1,081
Fife Council - Multiply Funding	–	–	–	–	–
Day2Play - Donations/Fundraising	–	–	–	–	–
Big Lottery - Cost of Living	–	–	–	–	–
Fife Council - OFP Lone Parent Poverty in Work	–	–	–	–	–
Fife Council - Fife Teen Parents	38,889	–	–	–	38,889
Donation - Fife Teen Parents	8,000	–	–	–	8,000
Big Lottery Young Start - Fife Teen Parents	–	13,750	(13,750)	–	–
Small Grants	–	–	–	–	–
Children in Need - Fife Teen Parents	–	38,097	(37,044)	(283)	770
ESIF - Making it Work II/LP	–	47,010	(47,010)	–	–
OFP - Making it Work II/LP	–	37,115	(37,115)	–	–
Fife Council - Making it Work SLA LP	–	60,000	(58,835)	(1,165)	–
FC Local Areas - Making it Work II	14,235	575	(14,810)	–	–
Garfield Weston - Making it Work LP	7,652	–	(7,652)	–	–
Robertson Trust	–	–	(19,720)	20,000	280
Joseph Rowntree In work poverty - MIW LP	8,954	–	(6,651)	–	2,303

# Fife Gingerbread

## Company Limited by Guarantee

### Notes to the Financial Statements *(continued)*

Year ended 31 March 2023

#### 22. Analysis of charitable funds *(continued)*

Shell - Making it Work LP	1,000	–	–	–	1,000
DC Thomson/Northwood Donation- Making it Work LP	5,000	–	–	–	5,000
Fife Council Lacer - Child Maintenance	–	–	–	–	–
Fife Council - Whole Family Wellbeing Fund	–	–	–	–	–
Fife Council - Education Summer Activities	–	–	–	–	–
Mindful Bumps	–	–	–	–	–
Fife Council - Anti Poverty	–	–	–	–	–
Marie Reynolds Child Maintenance Campaign	1,499	–	–	–	1,499
Fife Council - Community Food	–	–	–	–	–
Fife Council - LA Summer in the Park	–	–	–	–	–
Fife Council - Making it Work for Families	5,487	(22)	–	–	5,465
Gannochy Trust	10,000	20,000	(20,000)	–	10,000
Capital City	1,887	164,711	(151,269)	(713)	14,616
Fife Council - PESF funding	4,500	45,000	(45,000)	–	4,500
New Park Donation	5,954	–	–	–	5,954
Glenwood High School Skills Development	–	10,000	–	–	10,000
Scotland	–	100	–	–	100
JS Hospital Fund	–	–	–	–	–
Fife Council - LP Urban Reiver	–	–	–	–	–
FVA - Social Creative Workshops	–	–	–	–	–
Fife Council SLA	–	–	–	–	–
Lottery AFA	579	–	(579)	–	–
Nu Track Donation	300	–	(300)	–	–
Nurturing Community Growth	–	–	(1,973)	5,000	3,027

# Fife Gingerbread

## Company Limited by Guarantee

### Notes to the Financial Statements *(continued)*

Year ended 31 March 2023

#### 22. Analysis of charitable funds *(continued)*

Big Lottery - Volunteer Buddy	3,936	17,868	(10,982)	(10,822)	–
Big Lottery - Lone Parent Advice	–	–	–	–	–
Roadshow	–	–	–	–	–
Heat & Eat	14,384	34,815	(22,477)	975	27,697
Cash for Kids	–	3,000	(3,000)	–	–
FVA (Parent tablets)	780	1,929	(2,709)	–	–
Digital Boost (Laptops)	–	4,000	(4,000)	–	–
DIMA (Wkly Cooking Groups)	–	750	225	(975)	–
Cash for Kids	–	–	–	–	–
BBC Children in Need - Money Heroes	–	1,000	–	–	1,000
Fife Council - Glenrothes LA TTT Club	–	375	(375)	–	–
Sandy Brae	–	500	–	(500)	–
FVA - Explore Fife	–	3,000	(173)	–	2,827
FVA - Going Slow	–	8,700	(5,900)	–	2,800
FVA - Social Glenrothes	–	3,500	(139)	–	3,361
Fife Council - LA Summer Activities	–	300	(300)	–	–
Fife Council - LA Glenrothes TTT(JCB)	–	550	(550)	–	–
Fife Council - LA Levenmouth TTT groups	–	1,000	(268)	–	732
Fife Council - LA Glenrothes TTT (MC)	–	510	(510)	–	–
Scot Govt - Get into Summer	–	500	(500)	–	–
Exxon	–	500	(500)	–	–
Kickstart	–	13,253	(12,862)	–	391
Senior Team Discretionary	10,000	–	–	(10,000)	–
Family Grant	–	740	(740)	–	–
NOLB - OFP	–	242,429	(200,869)	–	41,560
Big Lottery	–	–	(10,509)	10,509	–
	<u>163,999</u>	<u>1,036,208</u>	<u>(968,013)</u>	<u>27,914</u>	<u>260,108</u>

# Fife Gingerbread

## Company Limited by Guarantee

### Notes to the Financial Statements *(continued)*

Year ended 31 March 2023

---

#### 22. Analysis of charitable funds *(continued)*

<u>Name of Fund</u>	<u>Purpose</u>
Fife Council SLA – Early Years	Funding to support vulnerable families to give their children the best possible start in life through early intervention, a holistic whole family approach and partnership working.
Fife Council Opportunities Fife Partnership	Contributions towards lowering poverty for Fife families.
Opportunities Fife Partnership	NOLB funding to support unemployed Lone Parents into employment.
Robertson Trust	Unrestricted funds to be used for benefit of families.
Chance to Flourish	Contribution towards the Fife wide Teen Parent project.
RS Macdonald	Part of Early Years project. This fund within the project focuses on children to have the best start in life - reducing risk and upskilling parents.
Volant	Part of Early Years project. This fund contributes to the costs of employing a Family Learning Co-ordinator.
Community Jobs	Contribution towards salaries of placements for young people with barriers into employment.
Kickstart	Contribution towards salaries of placements for young people with barriers into employment.
FC – ILM funding	Contribution towards salaries of placements.
Fife Council – Fife Teen Parents	Part of Early Years project. Funding to support vulnerable families to give their children the best possible start in life through early intervention, a holistic whole family approach and partnership working.
Children in Need	Grant towards the Fife wide Teen Parent Project.
Big Lottery – Young Start	Grant towards the Fife wide Teen Parent Project.

---

# Fife Gingerbread

## Company Limited by Guarantee

### Notes to the Financial Statements *(continued)*

Year ended 31 March 2023

---

#### 22. Analysis of charitable funds *(continued)*

ESIF – Making it Work LP	Employability project for Lone Parents in Levenmouth, Glenrothes & SW Fife.
Joseph Rowntree – Making it Work LP	Contribution towards employability project for Lone Parents in Levenmouth, Glenrothes & SW Fife.
Garfield Weston – Making it Work LP	Contribution towards employability project for Lone Parents in Levenmouth, Glenrothes & SW Fife.
Donations – Shell & DC Thomson/Northwood	Donations towards Making it Work LP project - Employability project for Lone Parents in Levenmouth, Glenrothes & SW Fife.
Child Maintenance Campaign	Raise Awareness of Child Maintenance issues.
Fife Council – Lacer Funding	Salary contributions for support worker to work with Community Social Work.
Fife Council – Making it Work FF	Contribution towards employability project for families in the Cowdenbeath/Lochgelly and Kirkcaldy areas.
Capital City Partnership	Contribution towards employability project for families in the Cowdenbeath/Lochgelly and Kirkcaldy areas.
Gannochy Trust	Contribution towards employability project for families with an S1/S2 pupil living at home.
Fife Council – PESF funding	Contribution towards employability project for families in the Cowdenbeath/Lochgelly and Kirkcaldy areas.
Fife Council – Whole Family Wellbeing Fund	Contribution towards employability project for families in the Cowdenbeath/Lochgelly and Kirkcaldy areas.
New Park donation	Donation towards Making it Work FF project.
Glenwood High School	Contribution towards Making it Work FF project.

---



# Fife Gingerbread

## Company Limited by Guarantee

### Notes to the Financial Statements *(continued)*

Year ended 31 March 2023

---

#### 22. Analysis of charitable funds *(continued)*

Heat & Eat Campaign	Fife Gingerbread fundraising Campaign for support of food and fuel costs to families.
Day2Play Campaign	Fife Gingerbread fundraising Campaign to give families holiday activities to remember.
Fife Voluntary Action	Contributions towards staff training, families exploring Fife and social activities in Glenrothes area.
Cash for Kids	Cost of Living grant to support families in need.
Fife Council - Education	Summer activities for families.
BBC Children in Need – Money Heroes	Funds to deliver the Money Heroes Programme, a financial education initiative to young people.
Marie Reynolds	Contribution for Mellow training.
Fife Council – Community Food	Contribution towards breakfast and tea-time clubs.
STV Winter Appeal	To provide support to families in need.
DIMA	Donations towards food costs for weekly cooking groups.
Senior Team Discretionary	Allocation of unrestricted funds to Management team to be used for benefit of organisation.
Big Lottery – Cost of Living	Contribution towards cost saving items for families.
Big Lottery – Community Fund	Contribution towards Lone Parent Advice Line - A Roadshow.
Starcatchers	Contribution to deliver Mellow Ready, a twelve-week training course on positive relationships at local high schools.

# Fife Gingerbread

## Company Limited by Guarantee

### Notes to the Detailed Statement of Financial Activities *(continued)*

Year ended 31 March 2023

#### 23. Analysis of net assets between funds

	Unrestricted Funds £	Restricted Funds £	Total Funds 2023 £
Tangible fixed assets	–	4,146	4,146
Current assets	449,461	386,754	836,215
Creditors less than 1 year	–	(109,231)	(109,231)
<b>Net assets</b>	<u>449,461</u>	<u>281,669</u>	<u>731,130</u>

	Unrestricted Funds £	Restricted Funds £	Total Funds 2022 £
Tangible fixed assets	–	4,876	4,876
Current assets	417,409	401,800	819,209
Creditors less than 1 year	–	(146,568)	(146,568)
<b>Net assets</b>	<u>417,409</u>	<u>260,108</u>	<u>677,517</u>

#### 24. Financial instruments

The carrying amount for each category of financial instrument is as follows:

	2023 £	2022 £
<b>Financial assets that are debt instruments measured at amortised cost</b>		
Financial assets that are debt instruments measured at amortised cost	<u>836,215</u>	<u>819,209</u>
<b>Financial liabilities measured at amortised cost</b>		
Financial liabilities measured at amortised cost	<u>109,230</u>	<u>146,568</u>

#### 25. Analysis of changes in net debt

	At 1 Apr 2022 £	Cash flows £	At 31 Mar 2023 £
Cash at bank and in hand	<u>597,738</u>	<u>3,843</u>	<u>601,581</u>

# Fife Gingerbread

## Company Limited by Guarantee

### Notes to the Detailed Statement of Financial Activities *(continued)*

Year ended 31 March 2023

---

#### 26. Operating lease commitments

The total future minimum lease payments under non-cancellable operating leases are as follows:

	<b>2023</b>	2022
	£	£
Not later than 1 year	<b>27,600</b>	24,000
Later than 1 year and not later than 5 years	<b>7,200</b>	34,800
	<b><u>34,800</u></b>	<u>58,800</u>